

Elements of Art

Y7

These are the basic elements that are used by Artists in creating Art: they are what you use to create an aesthetically pleasing work. When we make Art, we need to understand and apply these seven Elements of Art.



SHAPE

The outline or form of something. An area enclosed by a line. It could be just an outline or it could be shaded in.

FORM

Form is a **three dimensional shape**, such as a cube, sphere or cone. Sculpture and 3D design are about creating forms. In 2D artworks, tone and perspective can be used to create an illusion of form.



LINE

A mark made by an implement. Line is the path left by a moving point. For example, a pencil or a brush dipped in paint. Line can be used to show many different qualities, such as:

- *Contours - showing the shape and form of something.*
- *Feelings or expressions.*

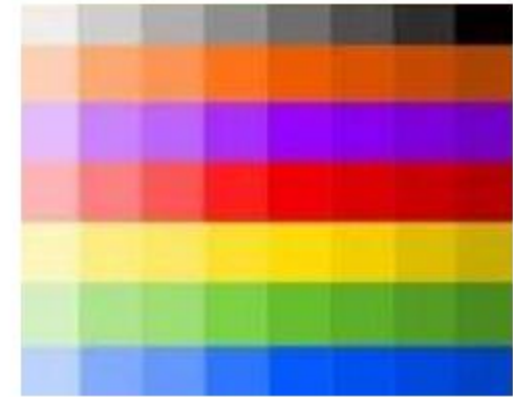
COLOUR

Is one of the most dominant elements. It is created by light. There are three properties of colour; **Hue** (name), **Value** (shades and tints) and **Intensity** (brightness).



VALUE

Degrees of lightness or darkness. The difference between values is called value contrast.



TEXTURE:

This is to do with the surface quality of something, the way something feels or looks like it feels. There are two types: actual texture and visual texture.



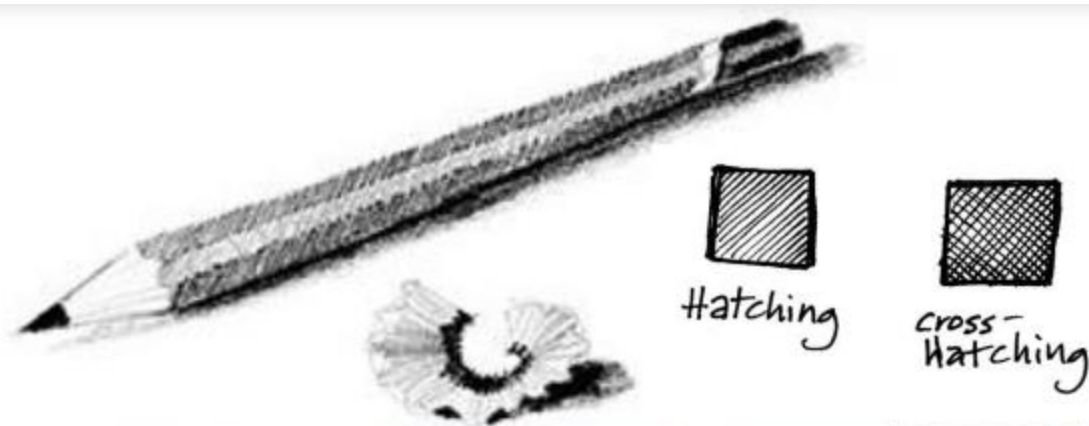
SPACE

The distance around and between things. How it's used to create the illusion of depth. Space can be two-dimensional, three-dimensional, negative and/or positive.

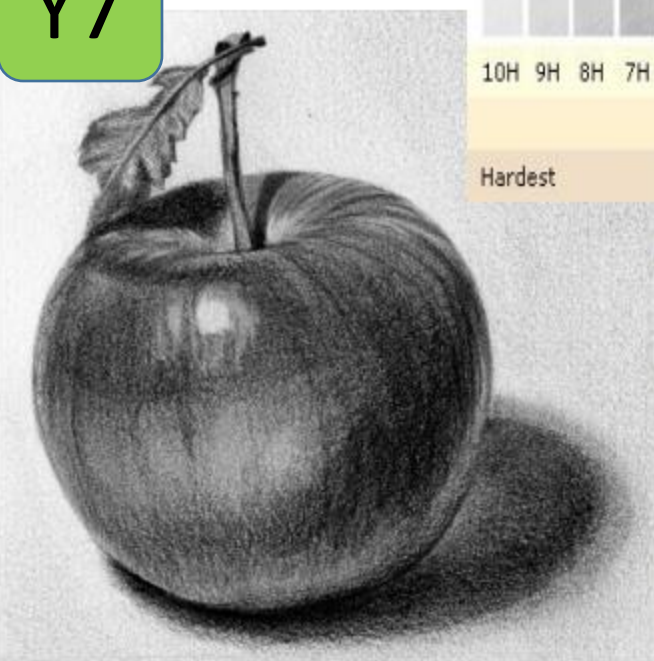
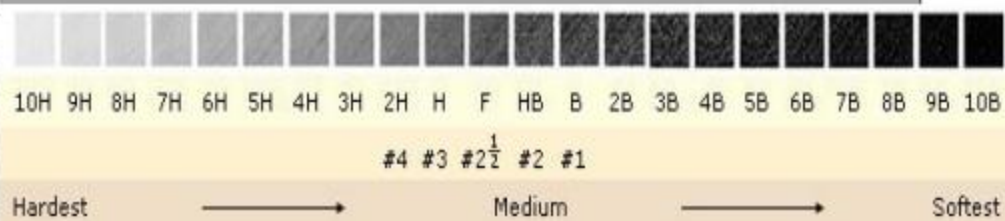


HOW TO USE A PENCIL

Tone refers to the lightness or darkness of something. This could be a shade or how dark or light a colour appears. Tones are created by the way light falls on a 3D object. The parts of the object on which the light is strongest are called highlights and the darker areas are called shadows.



Y7



How many different types of marks can you see in this Vincent Van Gogh drawing?

Mark making is a term used to describe the different lines, patterns, and textures we create in an artwork.



Pencils come in a range of hardness:

- The **H** range is hard and light and useful for design or technical drawings
- The **B** range is soft and dark and more suitable for shading and tonal drawings.

USEFUL WEBSITE for DRAWING :

<https://www.bbc.com/bitesize/guides/zc7sfrd/revision/2>